

MA 2100

Single jet water meter Residia Jet
for cold or hot water, with modular register
to Data Sheet LA 2100

Fitting and Operating Instructions

This water meter is designed for use in homes and buildings.

Delivery specification

1 Water meter
Fitting and Operating Instructions

Contents of these instructions

These instructions describe the proper fitting and commissioning of the single jet water meter Residia Jet. Regulations for drinking water installations that go beyond this (e.g. DIN 1988) are to be complied with separately

Technical Data

Model:	Residia-Jet
Rated flow:	Qn 1,5
Permissible media:	Drinking water, cold (40° C) or Hot water (90° C) – see marking and colour of litre indicator: blue = cold, red = hot (see drawing 1)
Rated pressure:	PN 10
Installed position:	Optional (except head downwards)
Metrolog. Class:	"B" for horizontal installation, dial upwards, "A" in all other installed positions

N.B. Modular register

The meter has a modular register; which allows the retrospective fitting of an electronic communications module.

The mounting provided for the module is closed off by a blanking cover secured by an adhesive seal.

This blanking cover must only be removed in order to fit a module in its place!

The fitting, operation and commissioning of the communication module is described in the Fitting Instruction supplied with it.

Fitting and commissioning

Tool required: Open ended spanner or similar to suit hexagon connection union.

1. For new installations: Bleed air from pipes and flush through well.
2. Shut off the pipe, depressurise and empty
3. Prepare the measuring point for the appropriate meter length.
4. Pre-assemble the connection unions and fit the seals.
5. Insert the meter in the direction of flow (see arrow on the casing) and screw the tubing nuts onto the unions, by hand at first.
6. Line up the meter in a position where it can be read (horizontally, or turned about its axis).
7. Finish tightening the tubing nuts on the unions.
8. Fill the pipe slowly and check the installation area for leaks; if necessary retighten the threaded joints.

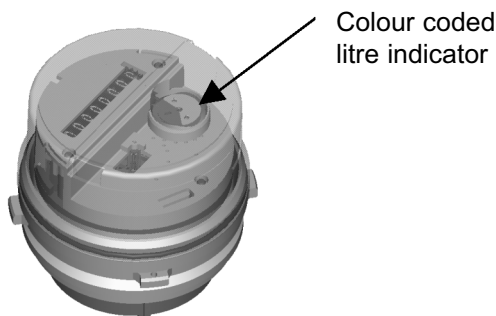
Important note: Protect the installed meter from frost, emptying it if applicable. Do not put the meter into operation in the frozen state. Thaw out at room temperature. Do not use any direct heat source (blowlamp etc.)!

Operation

The meter has a rotary counter with 5 digits before the decimal point (complete m³) and 3 digits after the decimal point. For test purposes there is an additional pointer with a scale value of 0.0001 m³. Read outs are normally only made from the rotary register.

Read-out example: Meter display 00154.286 = 154 m³ and 286 litres.

The meter does not require any maintenance. Statutory replacement intervals are to be observed.



Drawing 1

www.sensus.com
info.int@sensus.com

MA 2100 Material-Nr. 28114940

SENSUS
METERING SYSTEMS