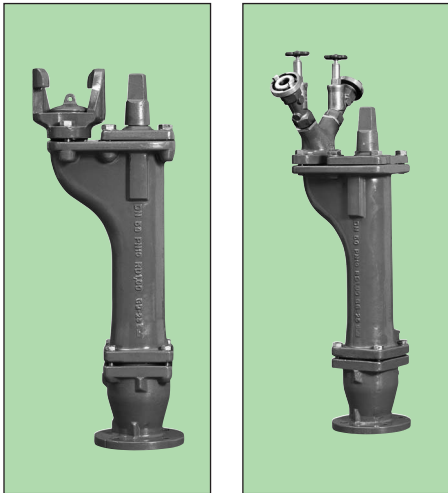




PN 10  
DN 50



Accessories

- Operating key
- Street box, cast iron
- Street box, plastic
- Street box, plastic adjustable
- Supporting plate plastic
- N piece(GGG)
- Standpipe “C”
- Lid cleaner for underground hydrant street boxes
- Further accessories on request

Further accessories on request

For information about installation, commissioning, operating and maintenance we kindly refer to our "Installation and Operating Instructions - Valves".

Product features

- Simple shut-off
- Automatic drainage and protection against loss of supply water
- Maintenance-free stem seal
- Pressure test certificate in accordance with EN 12266 (DIN 3230 Part 4)

Materials

- Body, cover, distributor (carwash version) made of cast iron EN – JL 1040 (GG-25)
- Main valve cone vulcanised with EPDM (W270)

Corrosion protection

- Inside and outside epoxy powder-coating

Field of application

- Permitted operating temperature for liquids: 50°C

Versions

- With claw for standpipe DN 50 as carwash hydrant with two shut-off valve outlets including outlet couplings Storz 32

Advice

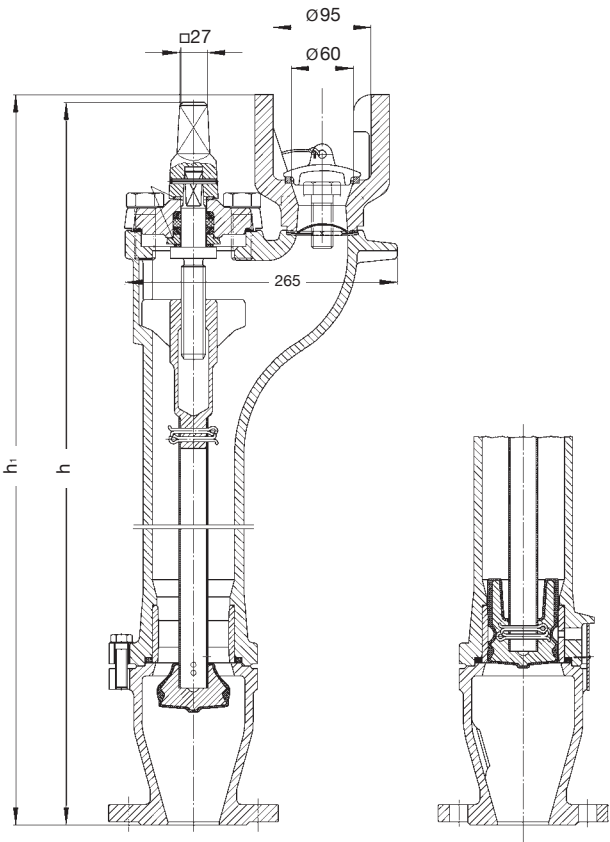
- Carwash hydrant cannot be installed under street box!

Field of Use

Final Inspection Tests in acc. with EN 12266

PN	Max. operating pressure	Max. operating temperature for water	Test pressure in bar with water	
			in body	in seat
10	10	50	15	11

Dimensions / weights

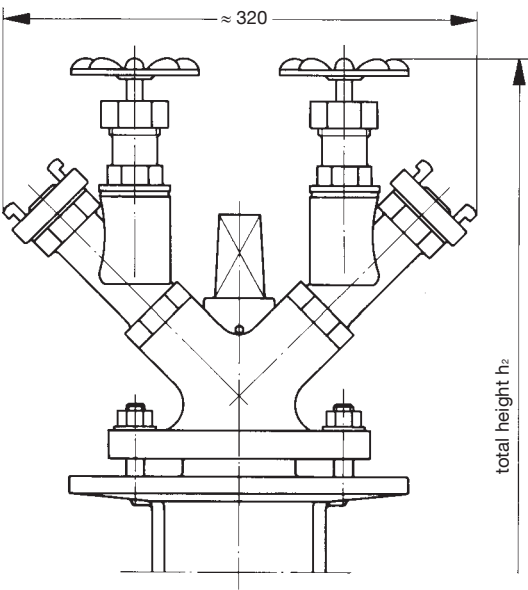


Pipe cover	m	1.00	1.25	1.50
Construction height „h“	mm approx.	680	930	1180
Construction height „h1“	mm approx.	690	940	1190
net weight	kg approx.	30	44	47
space req.	m³ approx.	0.09	0.12	0.14
Turns/stroke			approx. 8.5	

Versions

With 2 single shut-off valve outlets

- Distributing piece : GG-25  
Shut-off valve : bronze  
Coupling Storz 32 : brass  
gasket : natural rubber



Pipe cover	1.00	1.25	1.50
Construction height h <sub>2</sub>	790	1040	1290



PN 16  
DN 100



Product features

- Industrial use with claw DN 100
- Simple shut-off or double shut-off
- Automatic drainage and protection against loss of supply water
- Maintenance-free stem seal due to O-rings in MS bush
- Pressure test certificate in accordance with EN 12266 (DIN 3230 Part 4)

Materials

- Body, valve body, main valve cone, claw and cover made of cast iron EN – JL 1040 (GG-25)
- Main valve cone seal vulcanized with EPDM (W270)

Corrosion protection

- Inside and outside epoxy powder-coating

Field of application

- Max. operating temperature for liquids: 50°C
- For use outside public water supply networks

Comment on DIN 3221:

The underground hydrant DN 100 PN 16 cannot be used in public water supply networks for the public fire-fighting units without a claw reduction to DN 80.

Accessories

- Operating key
- Street box, cast iron
- EN piece (GGG)
- Claw reduction DN 100/80
- Lid cleaner for underground hydrant street boxes

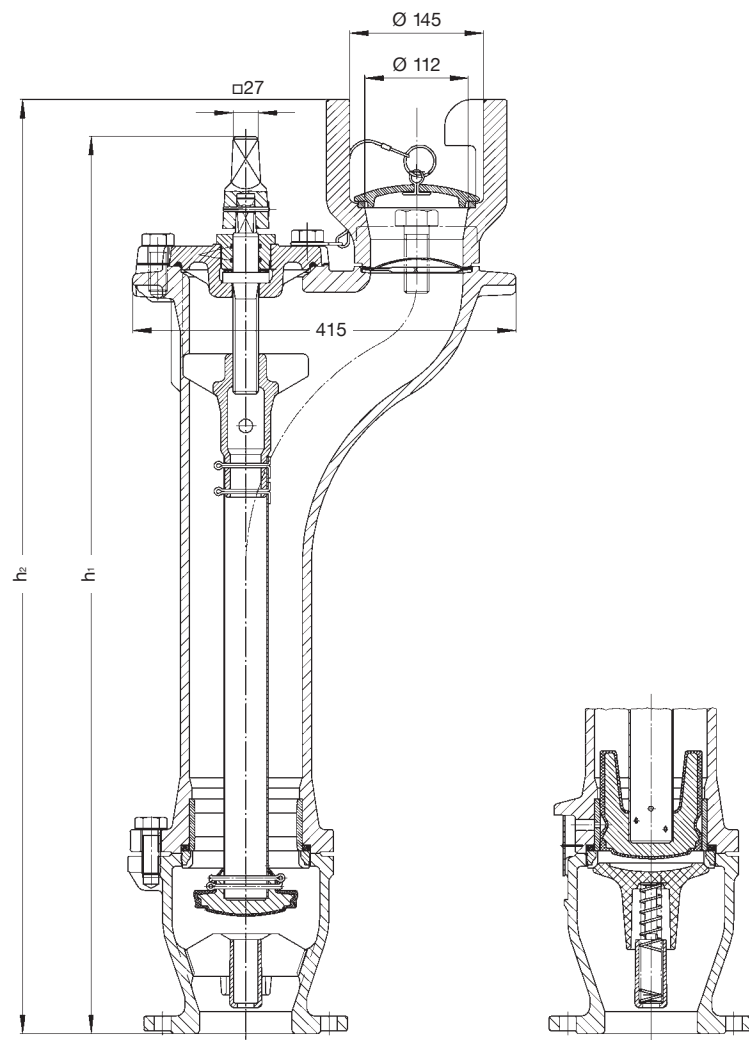
For information about installation, commissioning, operating and maintenance we kindly refer to our "Installation and Operating Instructions - Valves".

Field of Use

PN	Max. operating pressure	Max. operating temperature for water in body °C	Test pressure in bar with water	
			in body	in seat
16	16	50	24	17.6

Final Inspection Test in acc. with EN 12266

Dimensions / weights



Pipe cover	m	1.00	1.25	1.50
Construction height „h1“	mm approx.	680	930	1180
Construction height „h2“	mm approx.	725	975	1225
weight	kg approx.	67	75	89
space req.	m³ approx.	0.12	0.16	0.20
Turns / stroke			10	

We reserve the right to make technical changes and use similar or higher-quality materials. Drawings are non-binding  
www.vag-armaturen.com Edition3 - 08-07