



PN 16 / 25  
DN 25 / Inside thread G1

Product Features

- Single chamber air valve, directly operated by the flow medium
- For discharge of small air volumes during operation
- Cylindric inside thread in acc. with DIN ISO 228-1, G<sup>3</sup>/<sub>4</sub>" , G1" , G1<sup>1</sup>/<sub>4</sub>"
- Delivery inspection acc. to EN 12266 (DIN 3230 part 4)

Materials

- Body and bonnet of ductile cast iron EN - JS 1030 (GGG-40)
- Floats of plastic
- Venting seal of NBR

Corrosion Protection

- Inside and outside epoxy coated

Field of Application

- Minimum pressure for sealing of valve: 0,5 bar
- Max. operating temperature: 50°C

Alternatives

- PN 16 with stop cock
- PN 16 without stop cock

On request

- Pressure rate PN 25



For information about installation, commissioning, operating and maintenance we kindly refer to our "Installation and Operating Instructions - Valves".

Field of Use

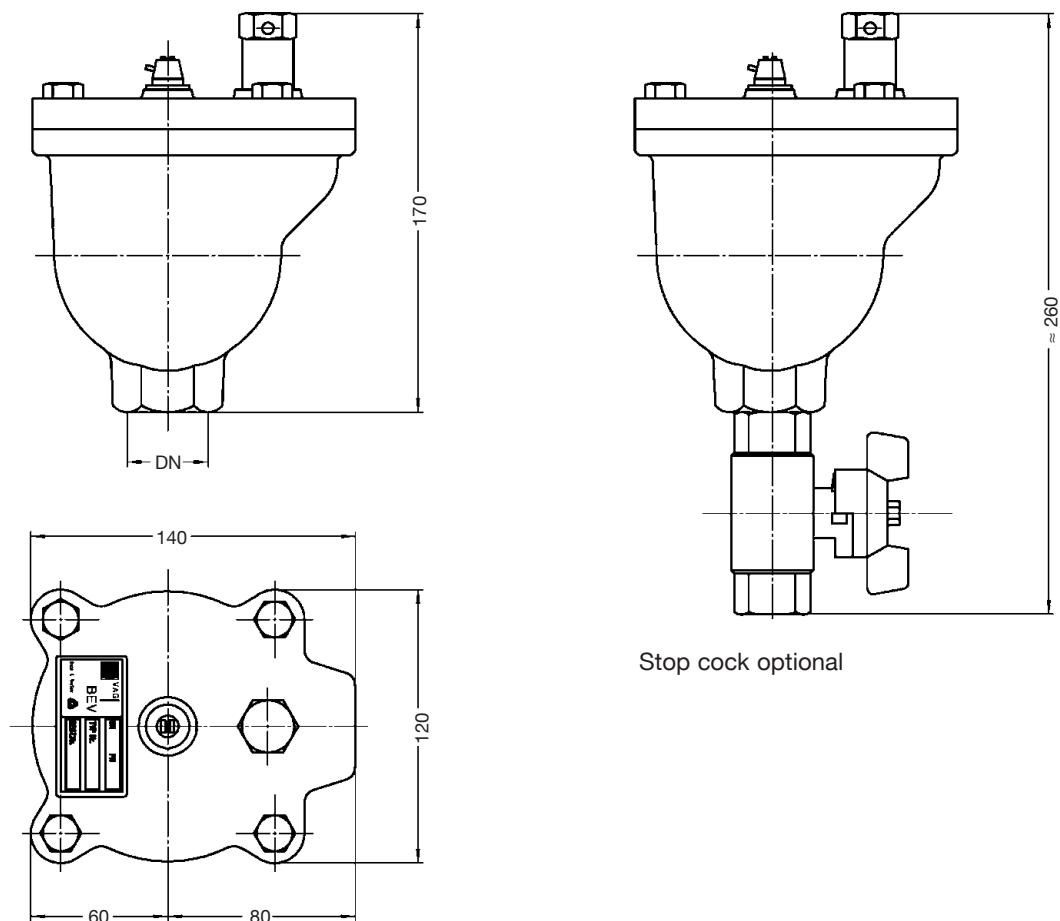
Water

Final Inspection Test in acc. with EN 12266

Connection thread DIN ISO 228-1 G...	PN bar	Max. operating pressure bar	Max. operating temperature for neutral liquids °C	Test pressure in bar with water in body and seat
<sup>3</sup> / <sub>4</sub>	16	16	50	21
1				
1 <sup>1</sup> / <sub>4</sub>	25	25		37.5



### Dimensions



Socket connection	G	$\frac{3}{4}$ "	1"	1 $\frac{1}{4}$ "
Weight without ball valve	(kg)	4,5	4,5	4,5

### Venting quantity

Discharge capacity under full operating pressure

